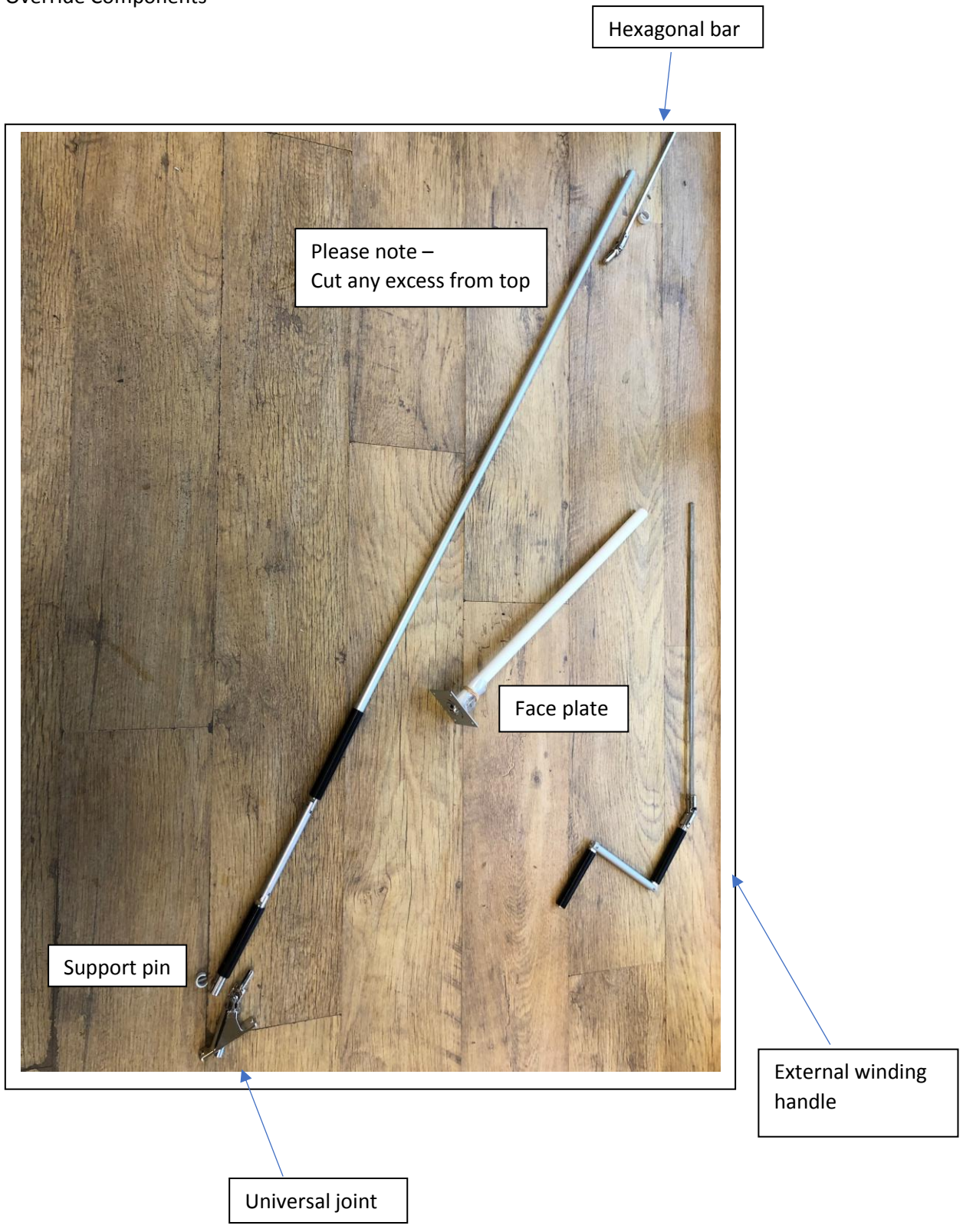


External low level override installation instructions

Low Level Override Components -



Step 1 –

Depending on installation, you need to decide if there is enough room to drill through the front (figure 1.1) or side wall (figure 1.2) to allow for the face plate. Ensure where you drill does not exceed the length of the internal bar. The length of the internal bar can be altered for shorter depths as detailed in the later steps.

Figure 1.1



Figure 1.2



Step 2 –

Drill a 25mm diameter hole through the brick, block or timberwork. The minimum distance between the internal universal joint and external face plate is 50mm. Once the hole is drilled, insert the face plate with the attached tube into position and mark fixing points for face plate (figure 2.1) and excess of tube on internal wall (figure 2.2).

Figure 2.1

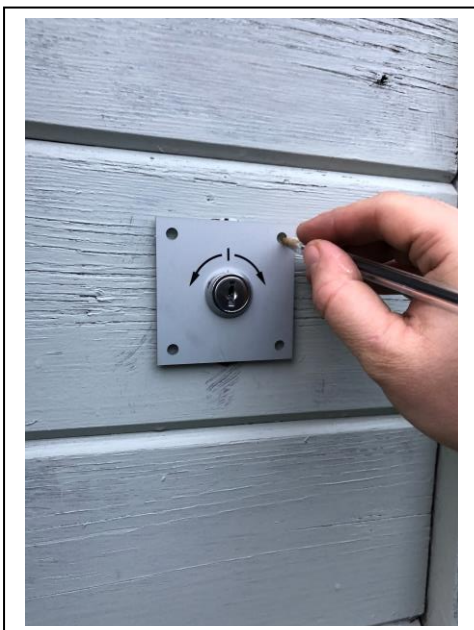
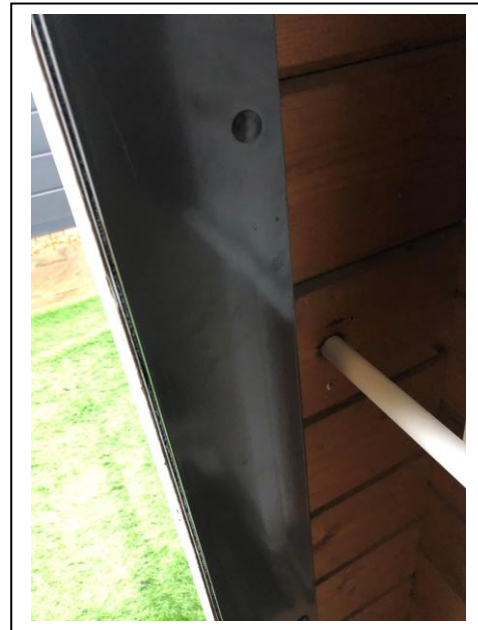


Figure 2.2



Step 3 –

Remove face plate with attached tube and cut the excess tube to length and drill the external holes for the face plate. Once complete, re-insert and fix into position (figure 3.1).

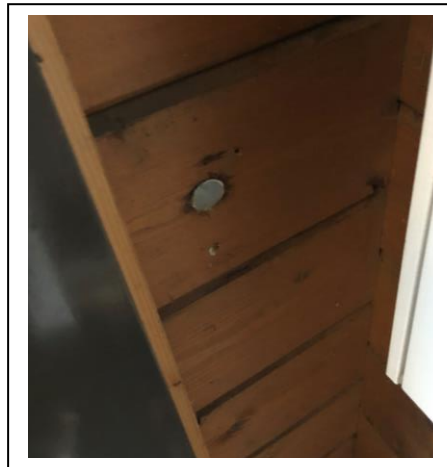


Figure 3.1

Step 4 –

Remove support pins at top (figure 4.1) and bottom (figure 4.2) of internal handle. Fix the universal joint vertically to the wall (figure 4.3) ensuring the hexagonal tube is inserted into the plastic tube which was attached to the face plate.

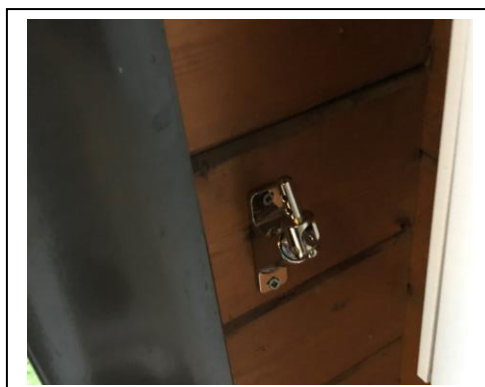
Figure 4.1



Figure 4.2



Figure 4.3



Step 5 –

Insert the hexagonal bar into the motor and secure with screw (figure 5.1).



Figure 5.1

Step 6 –

Fully insert the hexagonal bar in the motor (figure 6.1) and measure between the knuckle of the universal joint (figure 6.2) and the knuckle of the hexagonal override bar (figure 6.3) to prevent any movement from the hexagonal override bar at a later date (figure 6.4).

Figure 6.1



Figure 6.2



Figure 6.3

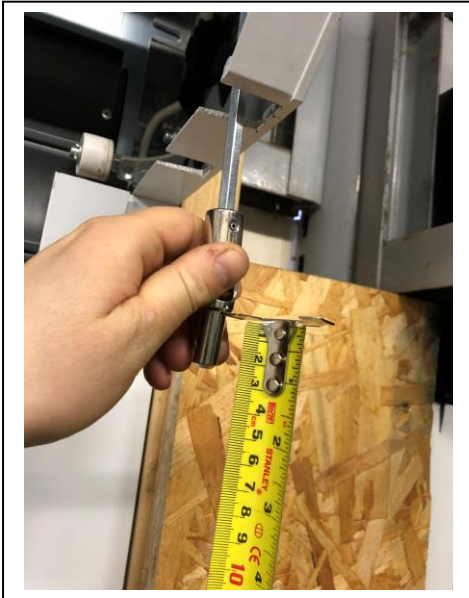
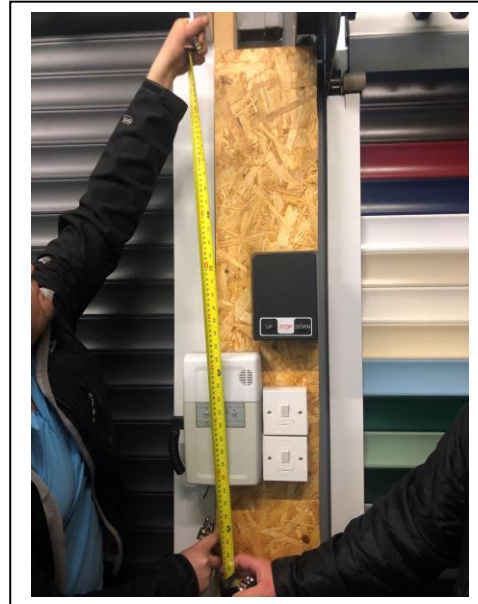


Figure 6.4



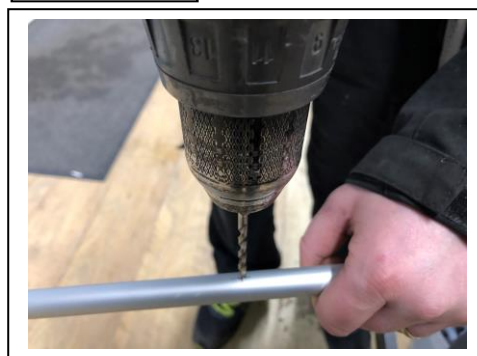
Step 7 –

Cut the excess of the override bar from the top (figure 7.1) and then using a 4mm drill, re-create the hole for the support pin (figure 7.2).

Figure 7.1



Figure 7.2



Step 8 –

Slide the override bar over the knuckles top and bottom and secure using support pins. **Please note, lower support pin can be removed to enable winding from inside in case there is a power failure whilst in the garage (figure 8.1).**

Figure 8.1



Step 9 –

Once override is fixed into position, send the door to the halfway position, remove barrel and insert external handle. Once linked in position, turn the bar to check direction of travel and make a note on the face plate for each direction (“UP” & “DOWN”) to each arrow.

Ensure the handle is not kept in the garage and when winding the door in the event of a power failure or malfunction **DO NOT OVERWIND.**